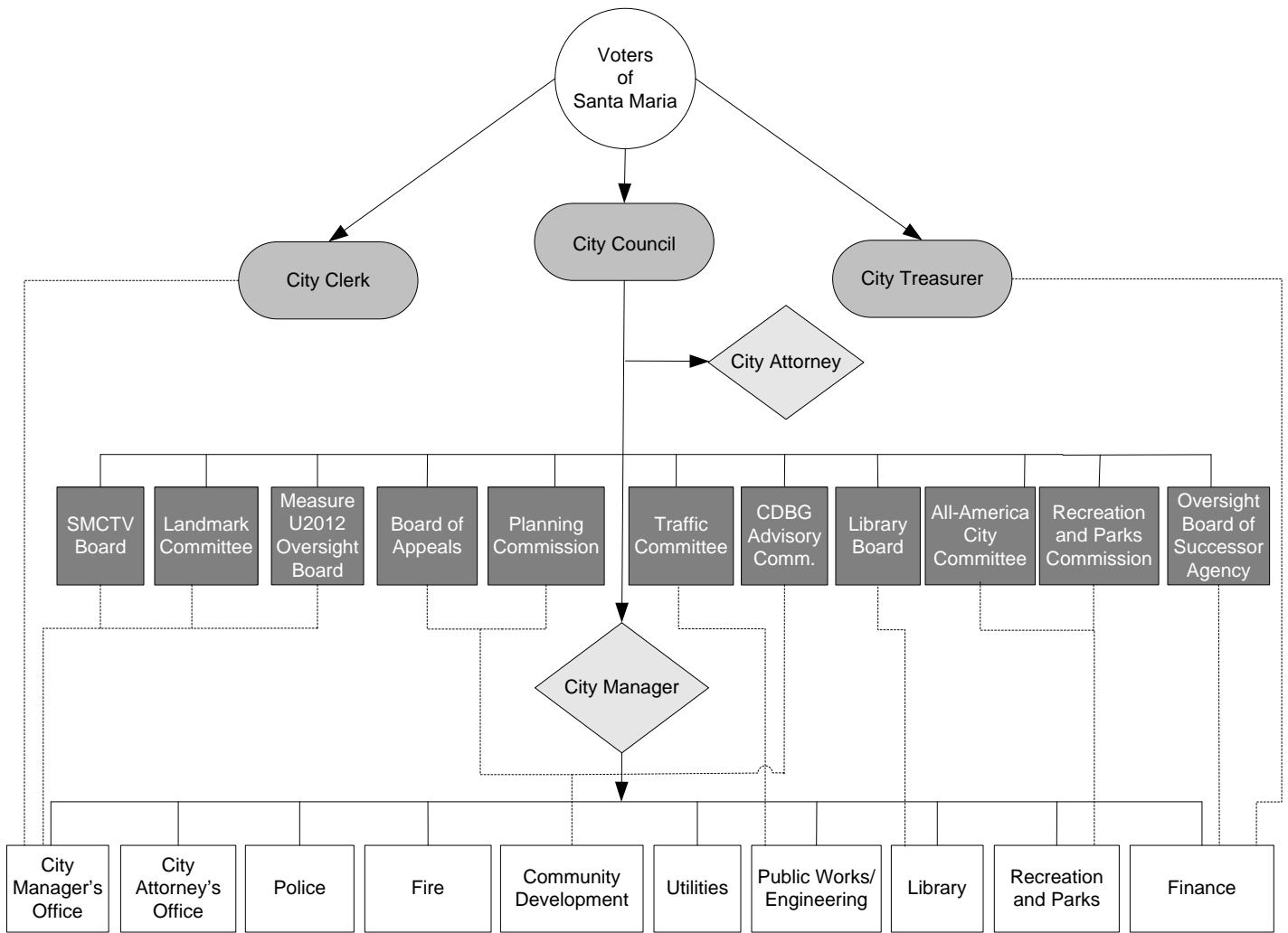


# ORGANIZATIONAL CHART



- City Manager's Office:** Administration, Human Resources, Records, Elections, Risk Management, Information Technology, PEG Television
- City Attorney:** Legal, Code Compliance
- Police:** Operations, Support, Administration
- Fire:** Prevention, Suppression, Administration, All-Risk Emergency Services
- Community Development:** Planning, Building, Special Projects
- Utilities:** Water, Solid Waste, Wastewater
- Public Works:** Engineering, Streets & Facilities, Transit, Fleet
- Library:** Santa Maria, Cuyama, Guadalupe, Orcutt, Los Alamos
- Recreation and Parks:** Recreation, Parks (Maintenance, Landscape Maintenance, Graffiti Eradication, Town Center Mall Maintenance), Rangers
- Finance:** Finance, Utility Billing

## Legend

